

# Learning Disability Mortality Review (LeDeR)

## Annual Report 2019 to 2020



easy  
read

# Introduction



Here at NHS South Sefton Clinical Commissioning Group and NHS Southport and Formby Clinical Commissioning Group we have written our first Learning Disability **Mortality** Review (LeDeR).

**Mortality** means death.



We are looking at every death of people with a learning disability in our local area.



We want to learn:

- how to reduce the number of deaths of people with learning disabilities



- how to improve health services for people with learning disabilities.

The report explains the work we have done on this in 2019 to 2020.

# Learning Disability Mortality Review (LeDeR)



The Government wants all local health services to look into the deaths of people with a learning disability in their area.



All the different local health services should work together to do this.



We should also work with local people, the local council and organisations that provide **social care**.

**Social care** is support for people who need some help to live independently.



We have to write a report every year which explains:

- how many people with a learning disability have died



- the main causes of death



- how health services should improve so fewer people die.



The Government will use these reports to:

- change the way health services work with people with a learning disability and their families



- change some of the ways that the Government and NHS works



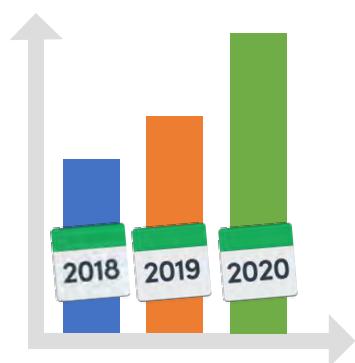
- help people plan and set up new, better services



- help people with a learning disability get the same good health services as everyone else.

# Deaths of people with learning disabilities in south Sefton, Southport and Formby

The number of deaths reported has gone up.



It was 27 in 2019 to 2020.

It was 22 in 2018 to 2019.

It was 19 in 2017 to 2018.



We think that the number of deaths have gone up because more health staff know about reporting deaths of people with a learning disability.



We need to make sure everyone knows about LeDeR so that they report every death.



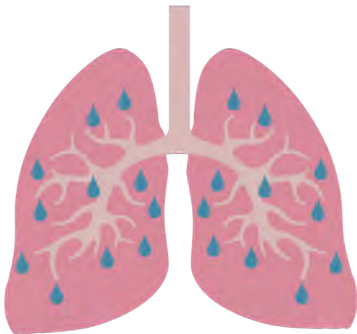
## Age

Most of the deaths of people with learning disabilities happen when they are over 50 years old.

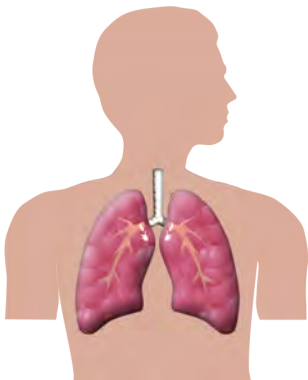


## What do people die of?

The most common causes of death for people with learning disabilities are **pneumonia** and **aspiration pneumonia**.



**Pneumonia** is an illness of your lungs. You get a cough, pains in the chest and it's hard to breathe.



**Aspiration pneumonia** is a disease in your lungs that is caused by breathing food, liquid or sick into your lungs.

# What we want to improve



## **Pneumonia and Aspiration Pneumonia**

We want to do more work to stop people with learning disabilities getting pneumonia and aspiration pneumonia.



We want to find people who have started with pneumonia and aspiration pneumonia before the illness gets too bad.



## **Yearly health checks**

We want more people with learning disabilities to have a yearly health check.

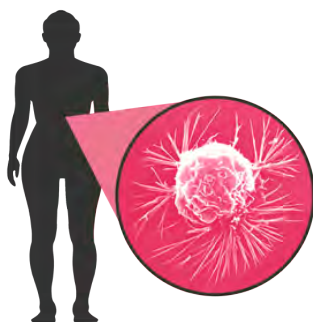


We are going to ask people to answer questions about their health before having the yearly health check.



This will help people to understand more about the health check.

We think this will encourage more people to go and have a health check.



## Cancer

**Cancer** is when cells in your body grow in the wrong way and form lumps called tumours. They can spread around your body.



We want cancer screening to be more available. This is tests or X-rays to see if you are starting with cancer.



## Dementia

We want people with **Down's Syndrome** to be checked for **dementia**.



**Down's Syndrome** is a condition some people are born with. People with Down's Syndrome will also have learning disabilities.





**Dementia** is a condition that affects the brain. People with dementia have problems with memory and can be confused. It usually affects older people.



## **Other things**

We want to make the best decisions for people with learning disabilities by working with their families and carers.



We want to make sure people with learning disabilities are being well cared for when they leave hospital.



We want to make sure all people with learning disabilities are safe and well looked after.



We want people with learning disabilities to have vaccinations and immunisations. These are injections that protect you against diseases.

# Working with people with a learning disability



Health services in Sefton and Sefton Council work with People First Sefton. This is a group of people with a learning disability.



They run a monthly group called the Getting Involved Group to talk about issues for people with a learning disability.



Some people with a learning disability from these groups come and talk at meetings in the Health and Council services.



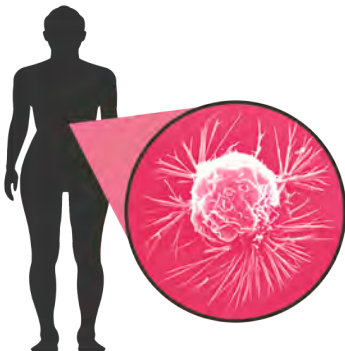
## Passport to good health

This year People First with health services got some money for a project called 'Passport to good health'.



This money will be used to encourage more people with a learning disability to have:

- a yearly health check



- a check for cancer



- a vaccine or immunisation which will help to stop them being poorly with certain illnesses.

# Managing the LeDeR



We have to set up a good way to look into the deaths of people with a learning disability.



The Government says that we should:

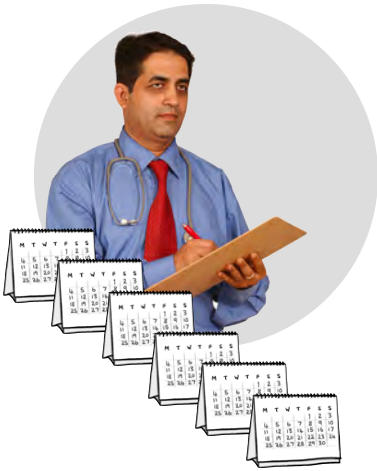
- have 1 person who is the contact for everything to do with LeDeR



- have a group of people from different organisations to manage the LeDeR



- make sure we start looking into the causes of death of every person with a learning disability within 3 months of the date they die



- make sure we finish looking into the causes of death within 6 months of the date they die



- write a yearly report



- have a plan of the things that we are going to do.



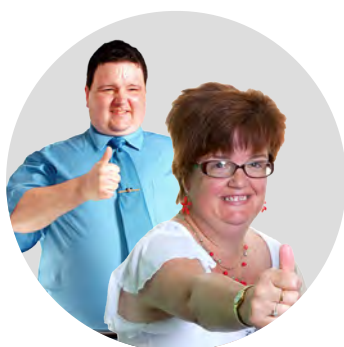
Sometimes it can take a long time to work out what has happened to someone. There may be an investigation. The police may be involved.

# The things we want to do in 2020 to 2021



The main things we want to do next year are:

- Involve everyone who is part of the LeDeR group.



- Involve people with a learning disability in a better way.



- Make sure that we look into the deaths of people properly.



- Tell the other health services how to care for people with a learning disability better.



- Health services to write an Action Plan about how to care for people with a learning disability better.



- Look at better ways to report the deaths of people with a learning disability.



- Have some more money so we can work better with all the local health services.



- Make sure more people come to our meetings.

# More information

For more information contact:



## **NHS South Sefton CCG:**

Post:

**Magdalen House**

**Trinity Road**

**Bootle**

**L20 3NJ**



Phone: **0151 317 8456**



Email: **[southsefton.ccg@nhs.net](mailto:southsefton.ccg@nhs.net)**



Website: **[www.southseftonccg.nhs.uk](http://www.southseftonccg.nhs.uk)**





## **NHS Southport and Formby CCG:**

Post:

**5 Curzon Road  
Southport  
PR8 6PL**



Phone: **01704 395785**



Email:

**[southportandformby.ccg@nhs.net](mailto:southportandformby.ccg@nhs.net)**



Website:

**[www.southportandformbyccg.nhs.uk](http://www.southportandformbyccg.nhs.uk)**

Photos by **Photosymbols**  
Easy Read by **[easy-read-online.co.uk](http://easy-read-online.co.uk)**